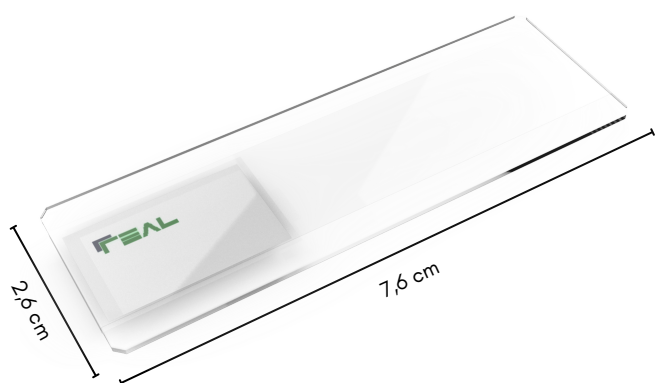


TECHNICAL DATASHEET

Graham Test

Ready-to-use glassslides for the detection of *Enterobius vermicularis*

The REAL Test de Graham Safe & Clean is the best solution for the detection of *Enterobius vermicularis*, it consists of a ready-to-use glassslide with adhesive tape that allows easy and efficient collection. Manufactured with the highest quality glass to ensure optimal viewing.



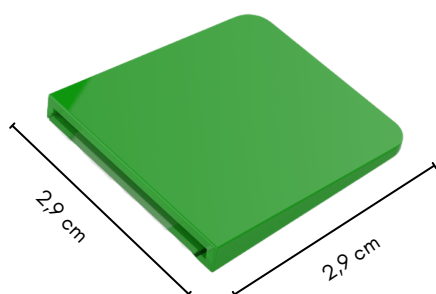
This version of the device also includes our revolutionary flexible plastic cap that facilitates collection, while avoiding direct contact between the patient's skin and the glass, preventing cuts and scratches, as well as decreasing the probability of accidental infection. during sample collection.

Technical specifications:

- It incorporates a tab for easy handling of the adhesive.
- Full viewing surface (no matte areas).
- Dimensions: 76 x 26 x 1mm.
- Ground corners at 45°.
- Option of packaging in a plastic box to prevent breakage or a paper envelope.

Advantages of the cap:

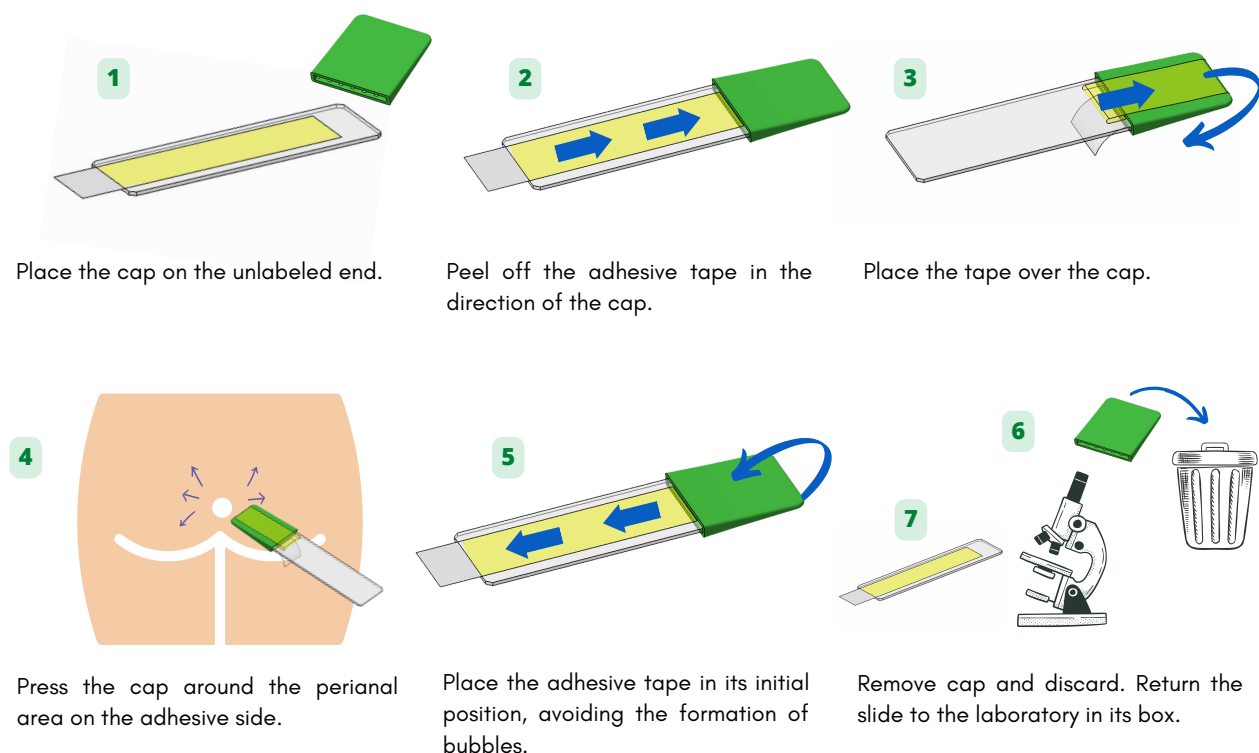
- Avoid direct contact with the perianal area, minimizing the possibility of contagion during sample collection.
- Prevents patient contact with the glass slide, preventing cuts or accidents.
- Flexible but resistant material for easy handling and safety.
- Its reuse is not recommended.




Indications of use

- Wash hands with soap before and after collection.
- Carry out sample collection early in the morning prior to cleaning.
- To ensure maximum parasite recovery, the collection of 3 samples on alternate days is recommended.

Protocol of use:



 To avoid contagion, handle carefully and wash your hands thoroughly after collection.

Catalog references:

Code	Description	Content
RP1713	Graham test	90 paper envelopes with 3 slides, without cap
RPTGSF	Graham Safe & Clean Test	60 rigid plastic boxes with 3 slides, including cap*
RPTGSFI	Graham Safe & Clean Test	50 rigid plastic boxes with 1 slide, including cap*

*Includes as many caps as slides

Precautions

- All samples must be treated as a potential source of infection.
- Before collecting the sample, check that the glass has no cracks or breaks and do not use if it is damaged.
- Handle glass carefully to avoid breakage.

Storage and disposal data:

- Store at room temperature.
- Use before the expiration date indicated on the label
- Dispose following specific methods for the destruction of material with biological content.

Class A in vitro diagnostic medical device in accordance with the provisions of Regulation 2017/746



is a registered trademark of
ed.230524



Durviz s.l. Leonardo da Vinci, 10, 46980, Paterna, Valencia, Spain
Tel. +34 96 136 61 07, E-mail: durviz@durviz.com - Internet: www.durviz.com